

Incorporating Financial Services in a Consumer Price Index

Dennis Fixler
Bureau of Economic Analysis

An earlier version of this paper was presented at a NBER Conference on Price Index Concepts and Measurement in June 2004. I am greatly indebted to George Smith and Gabriel Medeiros for their extensive work on compiling the indexes presented in the paper. I also thank Susanto Basu, John Greenlees, Brent Moulton, Jeremy Nalewaik, and Marshall Reinsdorf for their comments. The analysis and comments solely reflect the view the author and not necessarily those of the US Bureau of Economic Analysis or the US Department of Commerce.

Incorporating Financial Services in a Consumer Price Index

Dennis Fixler, 4-May-06

I. Introduction

In recent years, the use of financial services by consumers has grown with technological advances in both computers and telecommunications as well as with product innovation by financial firms. The national accounts measures of consumption include many financial services and as part of the comprehensive revision to the national accounts released last December, BEA improved its measure of the consumption of bank implicit financial services. However, the inclusion of financial services in a consumer price index has occurred to only a limited extent. Two complications are often cited that stand in the way of expanding the coverage of financial services. First, financial services involve activities that could be viewed as income generating and thus they are generally deemed outside the domain of such indexes. Second, financial service prices contain both explicit charges and implicit charges—the latter creates the problem of what value to place in the price index and this problem was the focus of the improvement by BEA in its measure of financial services consumption.

Setting the domain of a CPI involves a determination of the underlying purpose of the index. Most statistical agencies base their consumer price indexes on the cost of living (COL) conceptual framework.¹ That framework is not usually characterized with money or other financial assets in the utility function. The placement of money in a utility function has a long history in the literature and its justification rests on the fact that money facilitates transactions and provides a way of intertemporal transfers.² However, Alchian and Klein (1973) argued that assets in general should be placed in the utility function in order that a CPI should provide a better measure of inflation under the COL framework. More specifically they argued that assets must be included to obtain a meaningful answer to the question

¹ See National Research Council (2001)

² See for example Patinkin (1965)

“Does the individual need more or less money to remain at the same level of satisfaction?” (Page 186).

Another way to place financial assets in the domain would be to view them as though they were durable goods that provide implicit services that attend their holding. This is the view of the user cost of money approach, developed by Donovan (1978), Diewert (1974) and Barnett (1978).³ The precedent for putting such a framework in a CPI has already been set by the common treatment of housing in CPIs which imputes a rental value of the services received from owner occupied housing.

Both of the above perspectives relate to a multiperiod analysis rather than the single period analysis of the standard cost of living framework. Pollak (1975) pointed out that there are several difficulties in constructing a multiperiod cost of living index: futures markets are not always available, expectations about the future do not hold with certainty and capital markets are not perfect. One way to handle the multiperiod problem in the context of the cost of living index is to treat a single time period as a subindex of the multiperiod problem and apply the single period analysis. Similarly, Barnett (1980) constructs a multiperiod optimization problem for a consumer on the basis of separability of financial assets from other goods and services and shows that the optimization problem regarding financial assets can be reduced to a one period problem. Accordingly, this paper also focuses on the one period problem; the attention is on the consumption of financial services within the period being considered.

Consumers purchase many types of financial services that are concomitant with financial assets and liabilities. The inclusion of such services in a CPI rests on their not being tied to a future receipt of money. For example, the purchase of automobile insurance is commonly included in CPIs, as are other forms of property and casualty insurance. Yet the purchase of life insurance is not included because it is viewed as both an intertemporal transaction, in the sense that the contract concerns the future transfer of a sum of money to others and as a tantamount purchase of an

³ As in the case of capital equipment, the idea is that there is a flow of services that is received from a stock and the value of the services is given by the user cost of capital.

annuity, especially in the case of whole life insurance. Similarly, professional fees that are associated with financial management, such as accounting, are included in CPIs while fees for services such as financial advice, or portfolio management are generally excluded.⁴ However, this notion is inconsistent with the fact that the purchase of financial services by a consumer is consumption in the current period even though the purpose of the services is to increase income in subsequent periods. Therefore, these services should be included in the domain of a CPI. In principle, all financial services should be candidates for inclusion in a CPI. Schreyer and Stauffer (2003) consider an extensive set of financial services provided by financial firms and purchased by consumers and businesses.

As mentioned above, setting the boundary of a CPI domain is only part of the complication of including financial services; the valuation of these services is sometimes not straightforward. This is especially true in the case of bank provided financial services for which there is no observable charge. Thus a method of imputing the price of these services must be chosen.

Section II sets out more of the theory of incorporating financial services into a consumer price index. To give an idea of what a financial service component of a CPI might look like, Section III presents three financial service price indexes that are constructed from data in the Personal Consumption Expenditures component of the national accounts. Though the PCE price index is not based on a conceptual model of consumer behavior as is the CPI typically used by statistical agencies, it is hoped that the illustration may serve as a useful guide to those considering the incorporation of financial services in a CPI. Section IV provides a summary and conclusions.

II. Theory

Consumers are viewed as having a utility function that contains goods and services, inclusive of financial services. Woolford (2001) uses the following definition of financial services in discussing their incorporation into the Australian CPI: Fi-

⁴Further discussion on the inclusion of financial services in the domain of a CPI can be found in Woolford (2001), Triplett (2000) and Chapter 10 in International Labour Organization (2004)—a new version of their CPI manual.

nancial services are the services associated with the use, acquisition or sale of financial and real assets.⁵ This definition clearly captures expenditures on fees for portfolio management and investment advice.⁶

Though the purchase of financial services is tied to the acquisition or holding of a financial asset or liability, either of which can be cast as a financial product, the multiperiod dimension of the demand for these is not considered here; the focus is on the per period consumption of the attending financial services.⁷ One can think of the consumer as having both long-term and short-term optimization problems that are linked. In the long-term problem, the consumer plans consumption over time—the intertemporal optimization problem. This dynamic problem considers both consumption and the expected changes in income available for consumption. The short-run problem concerns the purchase of goods, services and assets/liabilities in a particular period, given the income and stock of financial assets available in the period.⁸ The short-run problem therefore concerns the period pur-

⁵ This definition is also used in the discussion of financial services in International Labour Organization (2004).

⁶ The definition, however, does not distinguish between intermediate and final demand and such a distinction is important when considering the acquisition of a home and the related expenses. More specifically, some of the financial services involved in the purchase of housing are not classified as consumption in the US national accounts and in the accounts of most other countries. In the US, a notional business is set up for households that produces housing services from the investment in a house and these services are resold to the homeowner. It follows that in the US, the fees paid to real estate agents are not consumption, part is allocated for the purchase of land and is considered an intermediate purchase and part is allocated for the purchase of the structure and is classified as fixed investment; Woolford (2001), in contrast, lists real estate broker services as part of the Australian CPI.

⁷ Some might be concerned that the definition of financial services transforms the CPI from an expenditure basis to a use basis, which affects the price recorded for goods and services that span more than one time period. For example, under the current expenditure approach the price of a purchased auto would be recorded in the CPI while under a use approach some estimate of the per-period value of the service flowing from the auto would be incorporated in the index. But this is not the intent. The focus is on the financial services inextricably attached to the asset/liability. One cannot purchase a deposit product without purchasing record-keeping and safe-keeping services.

⁸ In the standard one period model underlying the cost of living framework, the dual optimization problem is employed: consumers minimize expenditures to achieve a given level of utility in the period in which the consumption is to take place.

chase of any financial services that attend financial assets. For example, a depositor purchases the record keeping and safe keeping services implicit in the holding of deposits in the period that the deposit is held. Similarly, a portfolio manager is paid for his services (carrying out transactions and providing advice) in the period that they are provided. The fact that there are intertemporal considerations underlying the holding of deposits or a portfolio does not preclude the consideration of the purchases of the attending financial services in any period. The purchase of any asset, however, would not be included in the period measure of consumption.⁹

Banks provide numerous services; some have explicit charges and some have implicit charges. The valuation of the prices for implicit services is the major difficulty in forming a comprehensive set of bank services prices because many important financial services are provided implicitly. For example, the services of record-keeping and safe keeping mentioned above are implicitly provided to depositors and there are no explicit charges for these services.

The user cost of money approach developed by Diewert (1974), Donovan (1978), and Barnett (1978) is one way to impute the price of the implicit financial services.

¹⁰ This approach is taken below and it is identical with the one that underlies the user cost approach for implicit banking services that BEA implemented in the comprehensive revision released on December 10, 2003.¹¹

The key feature for the incorporation of financial services is presenting a characterization of price that includes both an imputed component and an explicit component. Consumers are viewed as price takers. Consumers purchase deposit products in which the attending cash flow represents a deduction from cash with the return of the cash plus an interest component at the end of the time period. Let D denote the deposit amount, r_D the interest rate paid on deposits and ρ the

⁹ Schreft (2006) describes how even the choice of a payment instrument can be the object of an intertemporal consumer optimization problem.

¹⁰ See Fixler and Zieschang (2001) for a discussion of the application of the user cost approach to CPIs.

¹¹ See Moulton and Seskin (2003) and Fixler, Reinsdorf and Smith (2003) for a discussion of the changes in the measure of implicit banking services in the national accounts that were implemented in the comprehensive revision.

risk free interest rate that serves as an opportunity cost of money. The cash flow without any explicit service fee is given by:

$$-D + \frac{(1+r_D)D}{1+\rho} = \left[\frac{(r_D - \rho)}{1+\rho} \right] D;$$

this assumes no withdrawals during the period.¹² The bracketed term on the right-hand side of the equality is the user cost of deposits from the consumer perspective. This expression says the difference between the reference rate and the deposit interest rate represents the implicit price paid by the depositor for the uncharged-for financial services. Explicit fees must be considered and they can be captured in one of two ways. One could include a service fee in the above expression, but it would have to be defined on a per dollar basis which may be counter to the way that the actual charge is assessed. For example, the charge for certifying a check is usually a flat fee that is independent of the amount of the check. Alternatively, explicit service fees can be treated separately and that is the approach used in the example presented in Section III.

The deposit user cost price above is the negative of the user cost price of deposits from a bank's point of view; the one used in the 2003 comprehensive revision to the national accounts (see Fixler, Reinsdorf and Smith (2003)).¹³ The sign difference results entirely from the fact that the asset and liability designations for the consumer are the reverse of that for the financial intermediary; a deposit product is an asset to the consumer but a liability to the supplying bank. In keeping with the assumption that consumers are price takers, the form of the user cost price for deposits will be that charged by a bank and the discount factor is suppressed:

$$p_D = \rho - r_D. \tag{1}$$

¹² Barnett (1978) uses a dynamic optimization model to derive the user cost of money prices.

¹³ In the computation of the user cost prices from bank data it is quite frequently found that for deposit products, $(\rho - r_D) > 0$ implying that the bank treats the deposit product as an output. In the consumer problem this means that the parenthetical term above is negative. The negativity is consistent with the notion of a payment for financial services by consumers and the positive sign for the bank is indicative of a receipt.

The above characterization of the deposit price is consistent with Dick (2002) that found that the demand for deposit services is based on both the service fee and interest rates.¹⁴

A similar analysis applies in the case of loans. From a consumer's perspective a loan is a liability that provides an amount L at the beginning of the period and at the end of the period requires the payment of L plus interest $r_L L$, where r_L is the loan interest rate. From the financial intermediary's perspective, however, the cash flow is the exact opposite, as the loan is an asset that provides earnings. The user cost price of the loan from a bank's perspective is thus:

$$p_L = r_L - \rho. \quad ^{15} \tag{2}$$

The interest rate differential in the above loan price captures the idea that consumers go to banks because it is relatively easier to convince a bank of one's credit worthiness than the market (or even one's relatives) and the consumer pays the bank a fee for its assumption of this credit risk.

In the above characterizations of the prices of the loan and deposit implicit services, the idea is that the transaction is in effect repeating itself in each period. In the case of loans, the implicit charge represented by the interest rate differential is a per period charge because if the loan continues, that is if it is neither paid-off or canceled by the bank, then the borrower pays for the continued assumption of the credit risk by the bank for the outstanding balance. Similarly if the depositor leaves money on deposit then deposit services are repurchased in the period.

The user cost price concept can be applied to numerous financial services. In countries where universal banking (one-stop financial service centers) the set of financial products is quite large and thereby creates more possibilities for implicit finan-

¹⁴ Furthermore, it is not just the deposit rate that is important but also the loan rate—evidently consumers consider the potential costs of having to switch to another bank in order to obtain a loan.

¹⁵ Holding gains or losses can also be included here and in principle in the deposit user cost as well. In the national accounts the inclusion of such values as part of valuation of financial services is currently being studied.

cial services. The extension of the user cost approach to different kinds of financial services is in Schreyer and Stauffer (2003).

A key component of the user cost price is the reference rate or benchmark rate. In theory, this rate should represent an opportunity cost of funds that guides decision making with respect to either the demand or supply of financial products. As can be seen from the discussion of the mirror images between the consumer user cost price and the financial intermediary user cost price, it is assumed that both banks and consumers have the same reference rate.¹⁶ It is also assumed that this single reference rate applies to all financial products. To illustrate, instead of depositing funds in a bank, consumers could purchase Treasury bonds. Though they would earn a higher interest rate by doing so they would forgo transaction services and some liquidity. From a bank's perspective, deposited funds can be invested in Treasury securities—they provide a credit-risk free source of investment income and a source of liquidity. This role for Treasury securities implies that they serve as an alternative to making a particular loan. Thus, the difference between the loan rate and the reference rate reflects the credit risk associated with the borrower; if the borrower did not have any credit risk then in principle he should be able to borrow at the reference rate.

There are several interest rates that have been mentioned as candidates for the reference rate and as the examples above indicate US Treasury rates are good candidates because they are default risk free and available to all. In the European Union, Eurostat requires an interbank rate. Though Fixler and Zieschang (1992) show that quantity indexes are robust with respect to the selection of the reference rate, the selection of the rate does affect the nominal level of financial services.

The inclusion of interest rates in the user cost prices raises the general question of whether to use book or market rates. Some considerations are: (i) individuals hold assets and liabilities over time so that the actual flow of interest expenses and receipts can be different from the one that is consistent with the market rate for any specific period; (ii) the detail available on the financial products held by individu-

¹⁶ Barnett (1995), for example, also assumes that one benchmark rate applies to all agents; in his model the benchmark asset provides no services other than its yield.

als may not permit an assignment of a correct market rate; and (iii) there is a national accounting convention to use book rates instead of market rates. Accordingly, interest rates here are computed in a way that reflects book rather than market values. More specifically, all interest rates used in the example below are computed by dividing some interest flow (receipt or expense) by the stock of the corresponding financial product at a point in time.¹⁷ This method of computation implies that all of the interest rates used in the user cost prices take into account the different maturities of the underlying financial product. For example, the computed reference rate reflects all the maturities of US Treasury securities held by banks and the computed loan rate reflects the maturities of outstanding loans.¹⁸

As is well known, the nominal interest rate in any period is directly related to the expected rate of inflation in that period, which implies that the interest rate dependent financial service prices can be affected by inflation. As a result, the user cost prices are deflated by a general price index; the gross domestic purchases chain price index is used to deflate the user cost price relative between t and $t-1$.

In addition to the general price level changing over time, the characteristics of financial products change over time and thereby create a need for quality adjustment as well. For example, suppose that in period t a deposit product has a minimum balance requirement and a service fee s and in period $t+1$, this minimum balance requirement is dropped and the service fee increased. Because there is a change in the quality of the service—the customer has more of the amount of deposit available to him, one would want to adjust the change in s for the change in the quality of the service.¹⁹ Fixler and Zieschang (1999) demonstrate one way of adjusting the user cost prices for changes in the quality of financial services. The price indexes constructed in the next section are not adjusted for change in the

¹⁷ As described in Fixler, Reinsdorf and Smith (2003) the change in the valuation of implicit services in the national accounts also employed a unit value computation of interest rates.

¹⁸ In the July 2005 annual revision the computation of the reference rate was changed to eliminate mortgage-backed securities, which have recently become risky because of reporting irregularities from the issuing firms.

¹⁹ In some instances the characteristics of the financial product and the financial service coincide. If the characteristic set of a deposit product were amended to include internet banking, then there would simultaneously be a new form of transaction service. However it is viewed, a quality adjustment would be necessary.

quality of the financial services. This omission largely derives from the absence of a readily available set of data that contains the information needed. More specifically, information on transaction restrictions (such as minimum balance requirements or number of checks allowed per month) or the number of ATMs is neither collected by the regulatory authorities, the prime source of data, nor by the Bureau of the Census in the Economic Census for banks. However, inasmuch as the purpose of the example in the next section is to show how a financial services component of a consumer price index might be constructed and how the resulting indexes behave rather than provide augmentations to official estimates, the absence of quality adjustments does not detract from the analysis. Of course, any official implementation of a financial services component to a consumer price index would have to examine the issue of quality adjustment.

III. A PCE based Financial Services Price Index

To illustrate what a financial service component of a CPI might look like, data from BEA's Personal Consumption Expenditures (PCE) are used to construct such an index. Because the purpose of PCE is to record expenditures of consumers (and non profit institutions serving households) as part of the overall measure of economic activity, PCE is not based on a cost of living framework and includes many types of expenditures that are associated with income generation. Table 1 lists the financial services included in PCE and provides their average share of the total for these financial services in 2000. Most of the listed financial services are components of the personal business category within PCE while other financial services are classified in the category related to the service--for example, auto insurance is in the transportation category. These financial services totaled 559 billion dollars in 2000. There is some overlap with the services included in the US CPI. In fact BEA uses the information regarding the explicit fees included in the CPI when computing real explicit bank services in PCE.

Most of the data that are used to compile the PCE components for bank provided financial services come from the Reports of Condition and Income (the Call Reports) that banks have to file quarterly with the Federal Deposit Insurance Corporation. Because these data are bank reported, there is no identification of the buyer of the financial services and so allocations are made using the Federal Reserve's

Flow of Funds Accounts data. For example, the household portion of bank implicit financial services is determined by looking at the household share of deposits and loans in the Flow of Funds data. In some cases it is straightforward to identify the purchaser—for example; personal loans can be confidently assigned to the household sector. These allocations change annually. The time period of consideration is 1987Q1 to 2002Q4. This period was selected because it is one in which the bank reporting requirements are relatively unchanged.

Though the December 2003 comprehensive revision to the national accounts, as described in Moulton and Seskin (2003) and Fixler, Reinsdorf and Smith (2003), implemented a user cost of money approach to compute the nominal value of the implicit bank services, there was no change in the computation of real values or constant dollar measure of implicit bank services. The constant-dollar measure of banks' implicit output equals (a) the constant-dollar value of banks' total output, estimated by extrapolating the base-year (2000) current-dollar estimate of banks' total (both explicitly and implicitly priced) output by the BLS estimate of the growth in banks' total output less²⁰ (b) the constant dollar real value of banks' explicitly priced output, estimated by deflating banks' service charges on deposit accounts and other noninterest income with the BLS CPI for checking account and other bank services and then adding an estimate of banks' real fiduciary activities based on the growth of the number of trust department discretionary accounts. This real implicit service output measure is then used to obtain an implicit price index (current dollar divided by constant dollar) for the implicit bank services. Observe that this price index does not directly relate to the user cost prices presented above.

Similarly, Moulton and Seskin (2003) and Chen and Fixler (2003) describe the changes in the nominal measure of property and casualty insurance output that were implemented in the comprehensive revision. These changes were the addition of premium supplements and the use of a measure of normal claims instead of actual claims; the nominal value of property and casualty insurance became pre-

²⁰ The BLS methodology for measuring bank output is explained in Kunze, Jablonski and Sieling (1998).

mium plus premium supplement less normal claims.²¹ Again, the computation of real values was not altered. The computation of the real values generally involves the use of various components of the BLS' CPI and PPI programs to deflate premiums (and premium supplements) and (normal) claims components, the methods of deflation are not the same across the various lines of insurance.²² These price indexes are used to compute real values in terms of the base year and then these real values are used to compute an implicit price deflator, which is the price index published by BEA²³. Some might argue that a premium less claims based measure of price is inappropriate for a CPI. It is beyond the scope of this paper to discuss the merits of different approaches to measuring insurance services in a consumer price index. The purpose here is to present an example of such an index in the context of Personal Consumption Expenditures, which uses the premiums less claims based measure of price.

Three financial service price indexes reflecting three different methods for estimating bank real implicit services are computed below: one is based on the current BEA procedure that uses an implicit price deflator, a second is an offshoot of the current method that separates depositor and borrower services and the third is a user cost based price index. In the first, the published BEA price indexes for all of the services listed in Table 1 are used to form a financial services price index component for PCE. Many of the service prices included in these indexes are explicit charges. For the implicit services provided by banks as well as for auto insurance, the BEA published price indexes are actually implicit price deflators that reflect the

²¹ Premiums supplements are the income earned by the insurer from investing unearned premiums and unpaid claims and this income is attributed to policyholders. Normal claims are computed as a moving average of actual claims—the idea is that insurers base their pricing on expected rather than actual claims.

²² In the case of homeowner's insurance double deflation is used because of the availability of a BLS CPI on household insurance premiums for renters. However automobile insurance is singly deflated by the CPI for motor vehicle insurance premiums. In the case of expenses for handling life insurance, BEA uses a composite index of BLS measures of earnings—that is, the deflation is based on input prices.

²³ BEA recognizes that this method of deflation is limited and has on its research agenda improving the method of deflation. One aspect of that research will be the possible use of the PPI for property and casualty insurance which already incorporates investment income in its price index.

changes in the computation of nominal values that were implemented in the 2003 comprehensive revision.

Because the financial services shown in Table 1 are found in different categories of PCE, the corresponding implicit price deflators must be aggregated in some way. In keeping with the fixed-base nature of the indexes, the aggregation is performed by using a Laspeyres-type aggregation—each implicit price deflator is weighted by its share of financial service expenditures in the base period. More specifically, let $IPD_i^{fs}(t,2000)$ be the implicit price deflator for the i^{th} financial services listed in Table 1. The aggregate fixed weight price index for financial services is then:

$$P_{FW}^{FinServ} = \sum_i IPD_i^{fs}(t,2000) s_{i,2000}^{fs} \quad (3)$$

where $s_{i,2000}^{fs}$ is the share of the i^{th} financial service in the base year, 2000.

Figure 1 shows the fixed weighted financial services price index in (3). It is compared to an aggregate PCE price index that is computed by weighting the PCE component prices by their shares in 2000, as done in (3). Clearly the financial services index is more volatile but that volatility does not appear to affect the overall PCE because the 2000 share of the financial services subset in Table 1 is approximately 8%. Interestingly, the share remains approximately constant throughout the period examined.

Under the current method for determining the real value of implicit banking services a total is computed and then allocated to deposit and loan services. This allocation is made according to the nominal shares of implicit deposit and borrower services. A subsequent allocation of implicit deposit and borrower services is made to households and business according to their respective shares of deposits and loan balances. Thus the sector allocation of nominal implicit services reflects both changes in user costs for depositor and borrower services and changes in sector shares of nominal deposit and loan balances. Because about 60 percent of the deposits at commercial banks are owned by persons and given that this percentage

has not changed much over time, an implication of the current procedure is that a change in the user cost price of deposits will affect the share of real implicit deposits services allocated to households. To illustrate, suppose that the user cost price of deposits increases, *ceteris paribus*, and results in an increase in the share of nominal implicit deposits services from 65 to 70 percent. Using the 60 percent value for household deposits, the share of real implicit deposits allocated to households will increase from 39 percent to 42 percent. Thus the real implicit deposit services consumed by households will increase because of the increase in the user cost price of deposits.

One way to remove the influence of changing user costs on the real consumption of implicit services would be to perform the quantity extrapolation by type of service—depositor and borrower services.²⁴ This second method is possible because the BLS measure distinguishes between these two types of services. More specifically, estimates of the overall real implicit depositor services are determined by extrapolating the base-year estimate of total (implicit and explicitly-priced) depositor services with the deposit component of the BLS quantity index and then subtracting a deflated measure of explicitly-priced depositor services. The amount of the personal consumption of real implicit depositor services is determined by the share of nominal deposit balances owned by persons. Therefore, changes in real personal consumption of implicit depositor services reflect changes in the BLS quantity index, changes in deflated measures of explicitly-priced depositor services, and changes in the personal sector's share of nominal deposits, but not changes in the user cost of deposits. The same approach is applied to borrower services.

Figure 2 illustrates the price indexes (implicit price deflators) that result from this more detailed and published methods of quantity extrapolation. The extrapolation by type has a large influence on total PCE after about 2000Q3 that reflects its greater influence on financial services at about that time. Note that the pattern of the financial services index does not change with the quantity extrapolation by type.

²⁴ This procedure was suggested by George Smith.

Figure 3 shows the effect of the change in the method of quantity extrapolation on the banks' implicit services component. Observe that the implicit depositor services price index for banks, when the quantity extrapolation is by type, has a substantial positive impact on total implicit services by type after 2000Q3. It should be noted that approximately 80% of the implicit services consumed by persons are deposit services. Accordingly, when treated separately the influence of implicit depositor services will be more pronounced; the joint treatment of depositor and borrower services obscures the relative weight difference.

A third method of computing bank real implicit service output uses the user cost prices in (1) and (2) to construct a Törnqvist financial service price index. The Törnqvist formula is used for mathematical simplicity; it easily allows for the isolation of sub-indexes and allows for an easy rescaling of expenditure shares. Furthermore because the Törnqvist formula and Fisher index formula used by BEA are both superlative, there will be no loss in the ability to compare the movements of this index with PCE chain Fisher price index published by BEA.²⁵ The general form of a Törnqvist price index is given by

$$P_{Tornq}(t, t-1) = \prod_i \left(\frac{p_i^t}{p_i^{t-1}} \right)^{0.5(s_i^t + s_i^{t-1})}$$

where p_i is the price of the i^{th} good or service and s_i is the expenditure share of the i^{th} good.

The financial services Törnqvist price index contains two sub-indexes: one containing the explicit financial service prices (some bank services, brokerage services and insurance) and one containing the implicit financial service prices. For implicit services (particularly some deposit and loan services provided by banks). For the first component, the Törnqvist index formula above is used; the prices are derived from actual charges and the shares are the expenditure on these services as a fraction of

²⁵ As Diewert (1976) illustrates the numerical difference among superlative index number formulas is very small, on the order of .001 index points.

the expenditures on all of the financial services listed in Table 1. This index is denoted by $P_{Tornq}^{explicit}(t, t - 1)$

For the implicitly priced services, the following Törnqvist formula is used

$$P_{Tornq}^{implicit}(t, t - 1) = \prod_i \left(\frac{\frac{P_{Li}^t}{P_{Li}^{t-1}}}{\delta(t, t - 1)} \right)^{0.5(s_{Li}^t + s_{Li}^{t-1})} \prod_j \left(\frac{\frac{P_{Dj}^t}{P_{Dj}^{t-1}}}{\delta(t, t - 1)} \right)^{0.5(s_{Dj}^t + s_{Dj}^{t-1})} \quad (4)$$

where L identifies loan prices, as in (2), and shares (implicit loan services as a fraction of total financial services) and D identifies the deposit prices, as in (1), and shares (implicit deposit services as a fraction of total financial services). There are 4 loan products and 11 deposit products. The term δ is given by

$$\delta(t, t - 1) = \frac{\text{Gross Domestic Purchases Price Index (t, 2000)}}{\text{Gross Domestic Purchases Price Index (t - 1, 2000)}}$$

and is intended to adjust the user cost prices for general inflation. In the example below, $\delta(t, t - 1)$ is based on a four quarter moving average of the published Gross Domestic Purchases Price Index.²⁶

The complete financial services price index is thus given by

$$P_{Tornq}^{FinServ}(t, t - 1) = P_{Tornq}^{explicit}(t, t - 1) \bullet P_{Tornq}^{implicit}(t, t - 1). \quad (5)$$

²⁶ Because this price index contains financial services it may appear that its use as a deflator for the user cost price relative is problematic. Based on an examination using fixed weight implicit price deflators, the inclusion of financial services has a very small impact on the deflated value of the user cost price relative. This small influence derives from the fact that the financial services in Table 1, on average, amount to about 5% of nominal Gross Domestic Purchases.

This bilateral index is a component of the chain Törnqvist price index that is used to compute the financial service price index for more than two periods.

Figure 4 shows the relationship among the book value based interest rates used to construct the user cost prices. Note that there are downward trends in all of the interest rates during the 1990-91 and 2001 recessions, despite these rates not being market rates.

Figure 5 shows a comparison between the chain Törnqvist financial services price index and the published chain Fisher PCE price index. Though the financial services price index is more volatile, the volatility of those prices does not appear to present itself in the overall PCE price index because, as noted earlier, the financial services subset of PCE amounts to approximately 8% of PCE for the period under consideration.

Figure 6 presents a closer examination of the movements of the components of the Törnqvist financial services price index. The overall steady increase in the total financial services price index is driven by the steady increase in the insurance subset that contains the insurance services listed in Table 1. The insurance subset amounts to approximately 40% of financial services in 2000, with the share not varying much over the considered time period. Observe that there is a decrease in price in 2001Q3 owing to the terrorist attacks on September 11, 2001.²⁷ The explicit fees component share in 2000 was approximately 18% and remained fairly constant. Bank implicit services had a share of about 12% with 9% deriving from depositor services and 3% from borrower services. Observe that some of the movement in the implicit financial services index influences the movement of the overall financial services index.

Figure 7 presents a closer look at the movement of banks' implicit financial services by presenting the depositor and borrower price indexes separately. Clearly the implicit services subindex follows the movement in the depositor series and this is

²⁷ This reduction would have been larger without the change in the measure of insurance implemented in the December 2003 comprehensive revision; see Chen and Fixler (2003) for a detailed description of that change.

due to the fact that depositor services range from 60-90% of implicit services while borrower services range from 10-40%. In 2000Q4 depositor services start to rise toward their peak of 90% while borrower services move toward their low of 10%. Looking at Figure 4 one can see that during this time all of the interest rates are falling but that rate of decline in deposit rates is relatively great which serves to increase the user cost price of deposits. Note that the decrease in deposit rates in the early 1990s also contributed to the large increase in the deposit user cost price index.

Figures 8 and 9 compare the movement of the user cost prices of deposit and borrower implicit services with the respective implicit price deflator. Figure 8 shows the user cost price of deposits with and without its deflation by a four quarter moving average of the Gross Domestic Purchases price index.²⁸ The implicit price deflator for depositor services is computed by dividing the nominal value of implicit depositor services by a corresponding real value that reflects quantity extrapolation with the BLS deposit output index. Though the levels are different the movement in all three series is very similar. This result derives from the fact that both the amount of deposits, which together with the user costs yields the nominal measure, and the quantity extrapolator do not change much over the period. In other words the variation in all three series is due to the variation in the user cost price.²⁹ The borrower counterparts for these series are presented in Figure 9 and the same analysis applies.³⁰ Though the patterns in the depositor and borrower services prices are nearly the same among the different measures of depositor and borrower service prices, the difference in levels affect the attending quantities of depositor and borrower services.

Figures 10-14 present the quantity indexes that correspond to the price indexes discussed above. The quantity indexes are computed by taking the quantity in year t

²⁸ In any period the user cost deposit price is computed as a deposit share weighted sum of the individual deposit user cost prices. The value without deflation is the user cost price indexes with 2000Q3=1.

²⁹ The movement in the moving average of the Gross Domestic Purchases price index is fairly stable.

³⁰ As in the case of deposits, the borrower user cost price is a loan share weighted sum of the individual loan user cost prices.

and dividing by the quantity in 2000. Figure 10 shows that the quantity index for total PCE is not changed when the quantity extrapolation is done separately by type of service instead of by a single combined service—the two quantity index series effectively lie on top of each other. This result seems to be due to the small weight of financial services subset in total PCE. Observe that the two financial services indexes differentiated by the method of quantity extrapolation show different levels, though the paths are very similar. Figure 11 focuses on the fixed weight quantity indexes for bank implicit services and shows that there is considerably more volatility in the quantity index for borrower services. The total implicit services have similar patterns but note that the large discrepancy that began in 2000Q4 is akin to the difference presented in early 1990s. In the earlier period depositor services increase slightly and given their higher share of implicit services it makes sense that the implicit services index would increase. The index with the combined quantity extrapolation, the current procedure, gives depositor services a relatively higher weight because, as explained earlier, the deposit share is influenced by the rising user cost of deposits for the period that is illustrated in Figure 8. The influence of the user cost prices on the shares also explains the divergence in the two total implicit services index in the later period. Starting in 2000Q4, borrower services rise relative to depositor services and this difference in trend is accentuated by the fact that the user cost of borrower services is rising, as illustrated in Figure 9, while the user cost of depositor services is falling, as illustrated in Figure 8.

Figure 12 compares the published chained Fisher PCE quantity index with the Törnqvist quantity index—computed implicitly using the Törnqvist price index.³¹ The amount of real implicit depositor services allocated to personal consumption is determined by the proportion of nominal deposit balances owned by persons—the real implicit borrower services allocated to personal consumption is analogously determined. This method of sector allocation is similar to that with the quantity extrapolation by type. Observe that the Törnqvist financial services quantity index does not rise as steadily as the PCE quantity index. The indexes approach each other in 2000 because that is their common base period. Again, the movements in

³¹ For period t , the nominal value was deflated by the Törnqvist price index for t . This value was then divided by the quantity index for 2000 to obtain a quantity index between periods t and 2000.

the financial services index do not have much influence on the movement in the overall PCE index because of its relatively small weight.

Figure 13 presents the quantity index for bank implicit services and its component depositor and borrower services quantity indexes. Observe that the large differences between the borrower and depositor indexes occurs in the period 1990Q2 to 1992Q1, which includes the 1990-91 recession, and in the period 2000Q4 to 2001Q4, which includes the last recession. In both cases, the beginning is characterized by a falling quantity of implicit borrower services and a rising quantity of implicit depositor services. Figure 9 shows that both the implicit price deflator and the user cost price of borrower services are declining in these periods. The implication is that the volume of borrower services did not increase with the fall in borrower services prices. In fact the growth rate of total consumer credit, as measured by the Flow of Funds, fell continuously in the period 1990-92 and in the period 2000-02. Regarding the quantity of implicit depositor services, it increases during both the periods noted above. Figure 8 shows that large increases in the user cost price of implicit deposit services occurs in the period 1990Q2 to 1992Q1 and the period 2000Q4 to 2001Q4. The implication is that the volume of deposits did not fall during these periods. Yet, as measured by the Flow of Funds, checkable deposits at commercial banks fell in 1990 increased in 1991 and 1992, fell in 2000 and 2001 and increased in 2002.. Thus the increase in the user cost price of implicit deposit services offset the decrease in checkable deposits when they occurred.

Figure 14 compares the different quantity indexes for implicit services from the different implicit service price indexes. In the most recent periods the current procedure leads to an understatement of the quantity of implicit financial services relative to the user cost price index. Observe that the understatement is even greater with the quantity extrapolation by type of service. The difference in the two fixed weighted quantity indexes is due to the influence that changes in user cost prices have on the sector allocations under the current procedure. For example, the large quantity increases under the current procedure immediately after 1988Q3 and 2000Q3 primarily reflect large increases in depositor user costs which flow through to the quantity measures. This movement is not observed with the quantity index that is based on the extrapolation by type of service because, as discussed earlier, changes in user-cost prices do not flow through to the quantity measures.

IV. Summary and Conclusions

The importance of financial services to personal (household) consumption has grown over time. However, the domain of consumer price indexes generally excludes such services if they involve the future generation of income. This paper maintains that expenditures on such services ought to be included in current consumption because they are outlays for services that are consumed in the period. For example, brokerage fees are payments for services provided at a point in time and similarly a depositor pays for the implicit services attending a deposit in each period that the deposit is maintained. The difficult operational question is how to measure the current period price of the implicit financial services.

The user cost of money approach has been used in several studies of bank output and price measurement and most recently by BEA in the nominal valuation of bank implicit services. In this paper the user cost based prices of implicit financial services are used to form a price index for bank implicit services which can then be included in a financial services price index. To illustrate, a financial services price index is constructed from a set of financial services covered in Personal Consumption Expenditures. It is shown that the quantity of implicit financial services using a user cost price measure can be substantially different from the quantity measured using the current BEA procedures for producing quantity indexes for implicit bank services. Given the differences among the quantity indexes, which one is likely to be the most accurate measure? The user cost price based index has two key advantages over the index under the current procedure. First, it directly relates to the user cost prices of the implicit services and thereby has a direct link to the nominal value of the implicit services. Second, the data are available quarterly—the quantity extrapolations used in the current method and in the alternative type of service method are based on an annual index provided by BLS. Currently the Bureau of Labor Statistics is developing a user cost based price measure for banking services that will be part of the Producer Price Index. BEA is also investigating possible improvements in its price index for implicit bank services.

References

- Alchian, A., and Klein, B. (1973) "On a Correct Measure of Inflation," **Journal of Money Credit and Banking**, vol. 5, no.1 part 1, February 173-191.
- Barnett, W. (1978). "The User Cost of Money," **Economics Letters**, 2, 145-49.
- Barnett, W. (1980). "Economic Monetary Aggregates: An Application of Index Number and Aggregation Theory," **Journal of Econometrics**, 14, 11-48.
- Barnett, W. (1995), "Exact Aggregation Under Risk," in **Social Choice, Welfare and Ethics**, Proceedings of the Eighth International Symposium in Economic Theory and Econometrics, Cambridge University Press, 353-374.
- Chen, B. and Fixler, D., (2003), "Measuring the Services of Property-Casualty Insurance in the NIPAs Changes in Concepts and Methods," **Survey of Current Business**, October 2003.
- Diewert, W. (1974). "Intertemporal Consumer Theory and the Demand for Durables," **Econometrica** 42, 497-516 .
- Diewert, W. (1976) "Exact and Superlative Index Numbers," **Journal of Econometrics** 4, 115-45.
- Dick, A., (2002), "Demand Estimation and Consumer Welfare in the Banking Industry" Finance and Economic Discussion Series, Federal Reserve Board, 2002-58.
- Donovan, D. (1978). "Modeling the Demand for Liquid Assets: An Application to Canada," **IMF Staff Papers**, 25, 676-704.
- Fixler, D., and Zieschang, K.D.. (1991) "Measuring the Nominal Value of Financial Services in the National Income Accounts," **Economic Inquiry**, 29, 53-68.
- Fixler, D., and Zieschang, K.D. (1992). "User Costs, Shadow Prices, and the Real Output of Banks," in Griliches, Ed., **Output Measurement in the Service Sectors**, Chicago: University of Chicago Press
- Fixler, D. and Zieschang, K..D., (1999), "The Productivity of the Banking Sector: Integrating Financial and Production Approaches to Measuring Financial Service Output," **The Canadian Journal of Economics**, 32, 547-569.
- Fixler, D. and Zieschang, K.D., (2001) "Price Indices for Financial Services"" presented at the April 2001 Ottawa Group meeting in Canberra Australia.
- Fixler, D., Reinsdorf, M. and Smith, G., (2003), "Measuring the Services of Commercial Banks in the NIPAs Changes in Concepts and Methods", **Survey of Current Business**, September 2003.

- International Labour Organization, (2004), **Consumer Price Index Manual: Theory and Practice** Draft , chapter 10, available at <http://www.ilo.org/public/english/bureau/stat/guides/cpi/index.htm>
- Kunze, K., Jablonski, M. and Sieling, M. 1998. "Measuring Output and Labor Productivity of Commercial Banks (SIC 602): A Transactions-Based Approach." Paper presented at the Brookings Institution Workshop on Banking Output, Washington, DC, November 20.
- Moulton, B. and Seskin, E, (2003), "Preview of the 2003 Comprehensive Revision of the National Income and Product Accounts: Changes in Definitions and Classifications", **Survey of Current Business**, June 2003.
- National Research Council, *At what Price? Conceptualizing and Measuring Cost of Living and Price Indexes*, Panel on Conceptual, Measurement and Other Statistical Issues in Developing Cost of Living Indexes, Charles I. Schultz and Christopher Mackie Editors, National Academy Press, 2002
- Patinkin, D., (1965) **Money, Interest and Prices**, Second Edition, Harper and Row Publishers, New York.
- Pollak, R. (1975) "The Intertemporal Cost-of -Living Index," **Annals of Economic and Social Measurement**, 4, Winter, 179-185.
- Schreyer, P. and Stauffer, P. 2002, "Financial Services in National Accounts: Measurement Issues and Progress," OECD Task Force on Financial Services in the National Accounts.
- Schreft, S. 2006, "How and Why Do Consumers Choose Their Payment Method," Working Paper ___, Federal Reserve Bank of Kansas City
- Triplett, J. (2000) "Hedonic Valuation of "Unpriced" Banking Services: Application to National Accounts and Consumer Price Indexes" unpublished paper July 2000. paper presented at NBER Summer Institute July 2000.
- Woolford, K., (2001) "Financial Services in the Consumer Price Index," presented at the April 2001 Ottawa Group meeting in Canberra Australia.

Table 1. The Set of Financial Services	
(Number in parentheses is the average share of Financial Services in 2000)	
Brokerage charges and investment counseling	
Equities commissions	
1.	Exchange listed equities (2.4%)
2.	Market making in over-the-counter equity securities (1.3%)
3.	Other equity securities, including specialists on registered exchanges and dealer trading (0.97%)
4.	Listed options Transactions (0.22%)
5.	All other securities transactions (4.6%)
6.	Broker charges on mutual fund sales (1.8%)
7.	Trading profits on debt securities (0.22%)
8.	Trust services of commercial banks (0.47%)
9.	Investment advisory services of brokers (2.4%)
10.	Commodities revenues (0.43%)
11.	Investment counseling services (3.1%)
Bank service charges, trust services, and safe deposit box rental	
12.	Commercial bank service charges on deposit accounts (3.2%)
13.	Commercial bank fees on fiduciary accounts (2.5%)
14.	Commercial bank other fee income (3.3%)
15.	Charges and fees of other depository institutions (2.6%)
Services furnished without payment by financial intermediaries	
16.	Commercial banks (11.5%)
17.	Other financial institution (18.4%)s
18.	Expenses of handling life insurance and pension plans (17.2%)
19.	Household insurance (0.69%)
20.	Auto insurance (7.7%)
Health insurance	
21.	Medical and hospital insurance (12.2%)
22.	Income loss insurance (0.3%)
23.	Workers Compensation (2.5%)

Figure 1 - Fixed-weighted Price Indexes (IPD), PCE,
Financial Services Subset

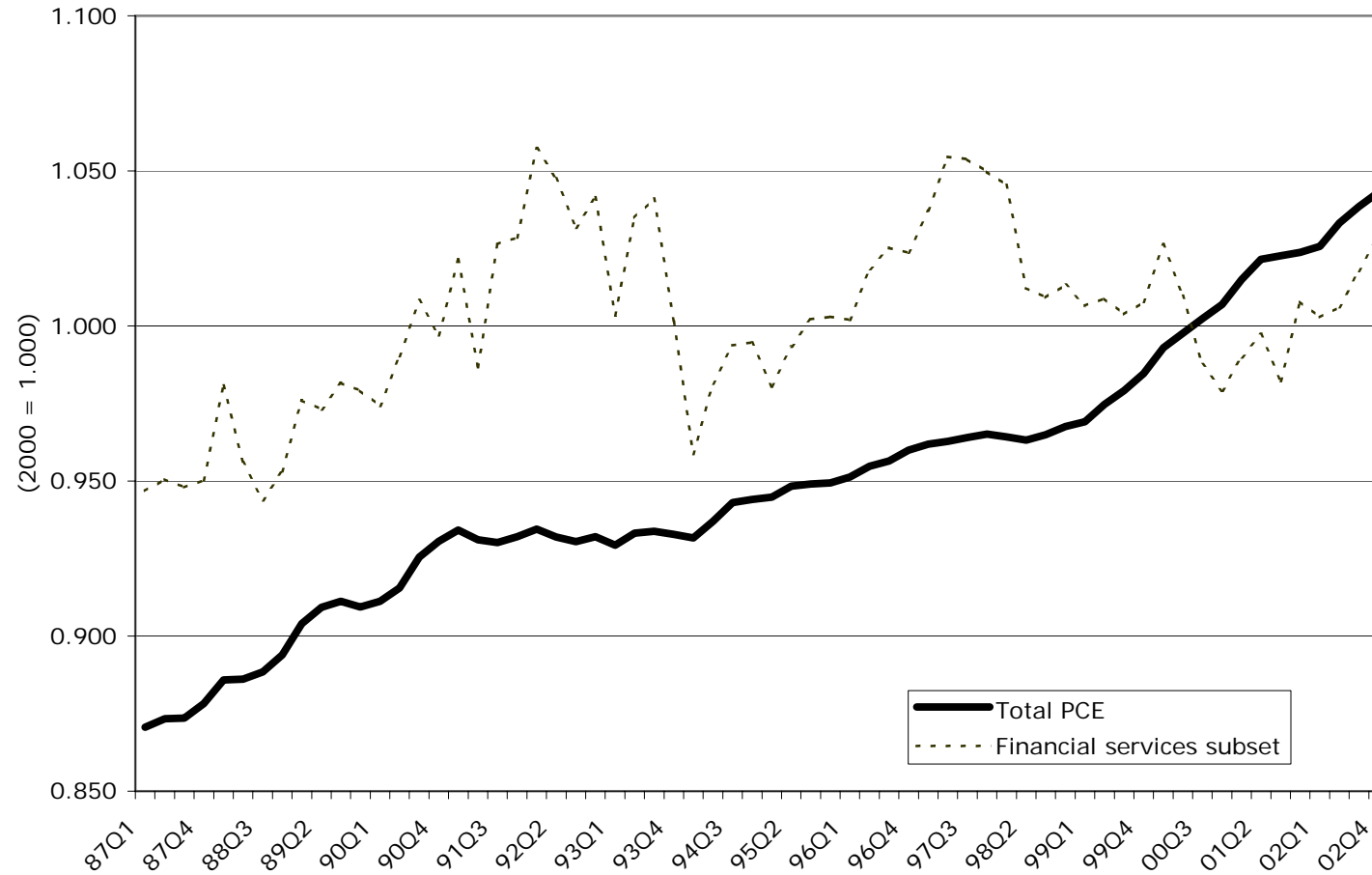


Figure 2. Comparison of Fixed-weighted Price Indexes for Financial Services and total PCE

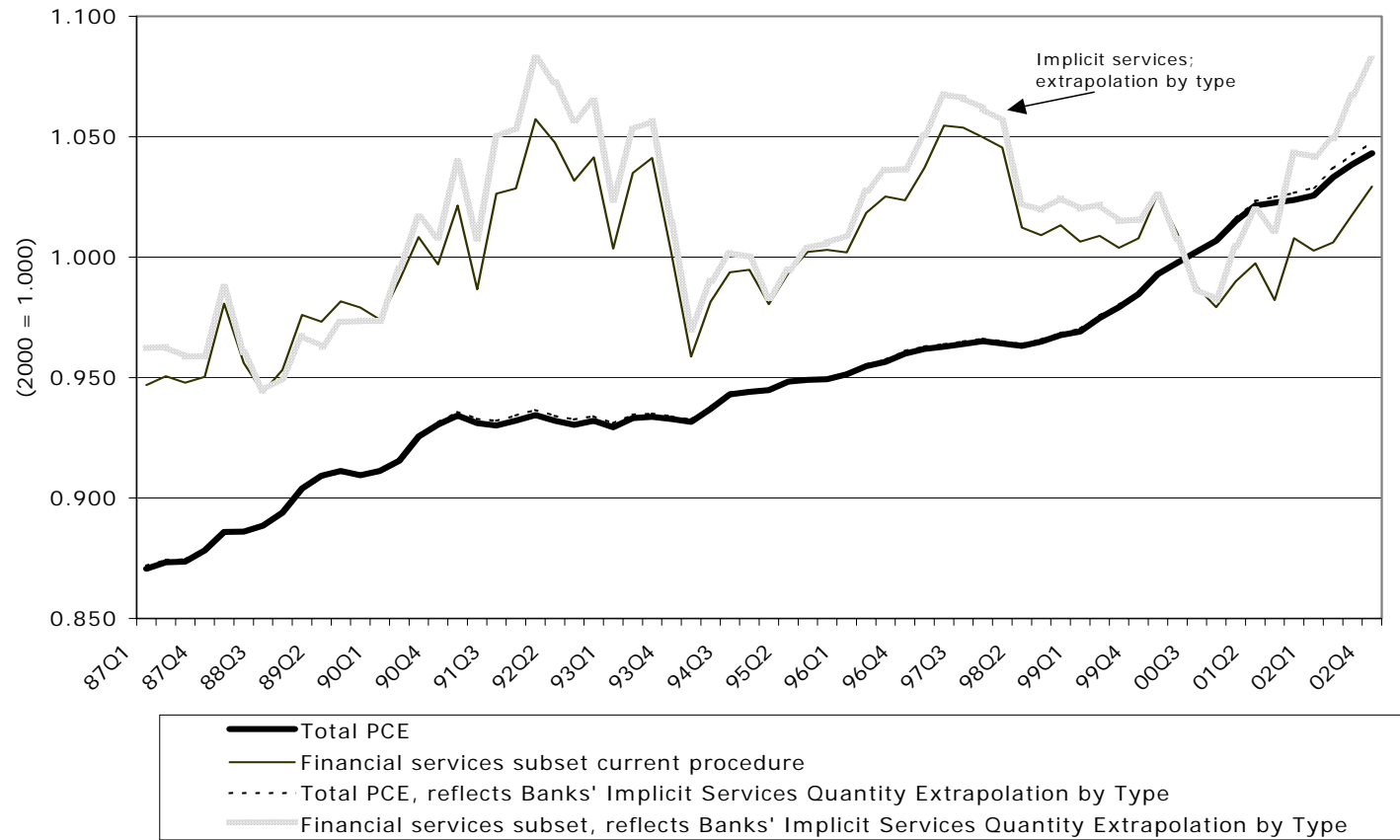


Figure 3. Price Indexes (Implicit Price Deflators) for Total Implicit Services; two methods of Quantity Extrapolation

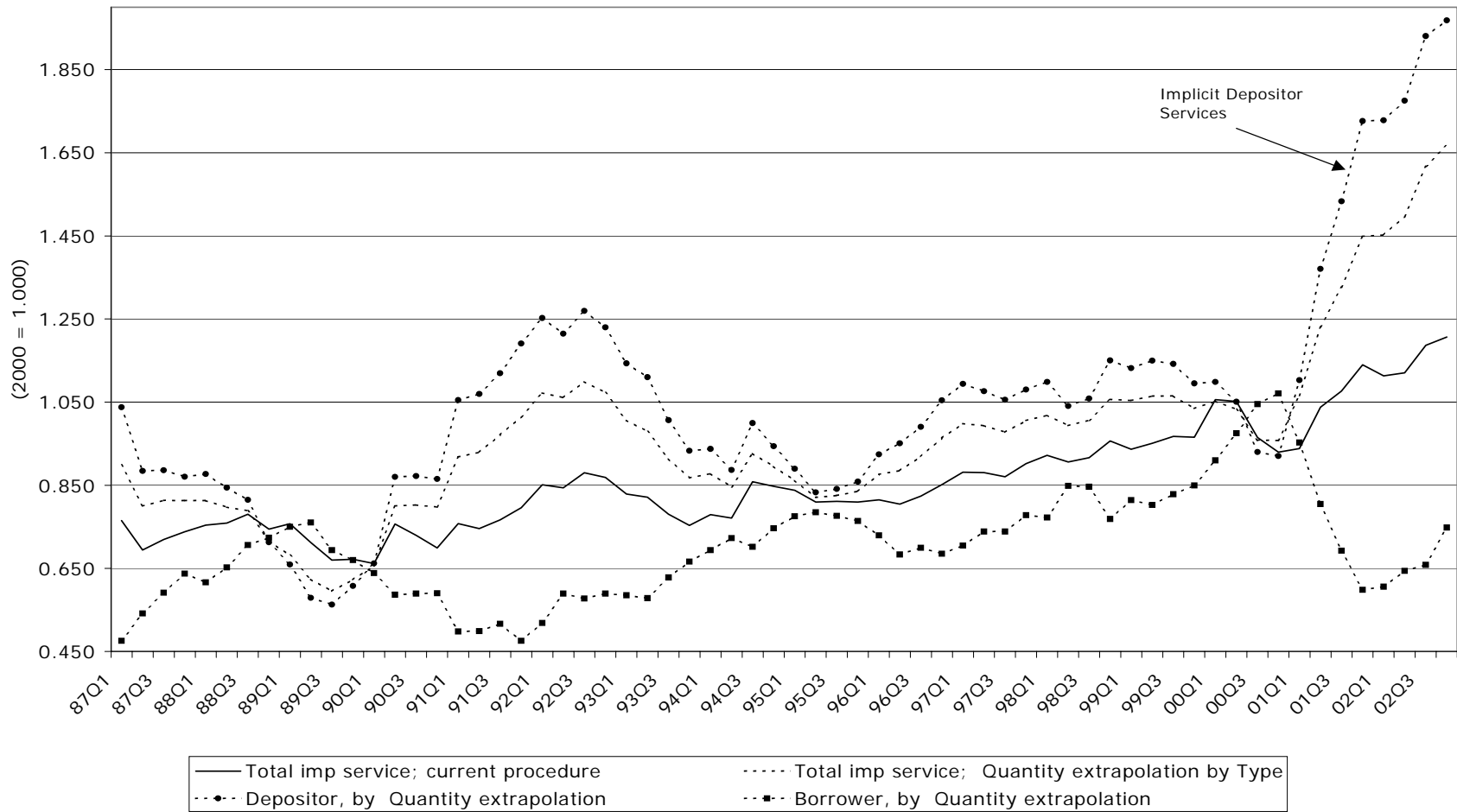
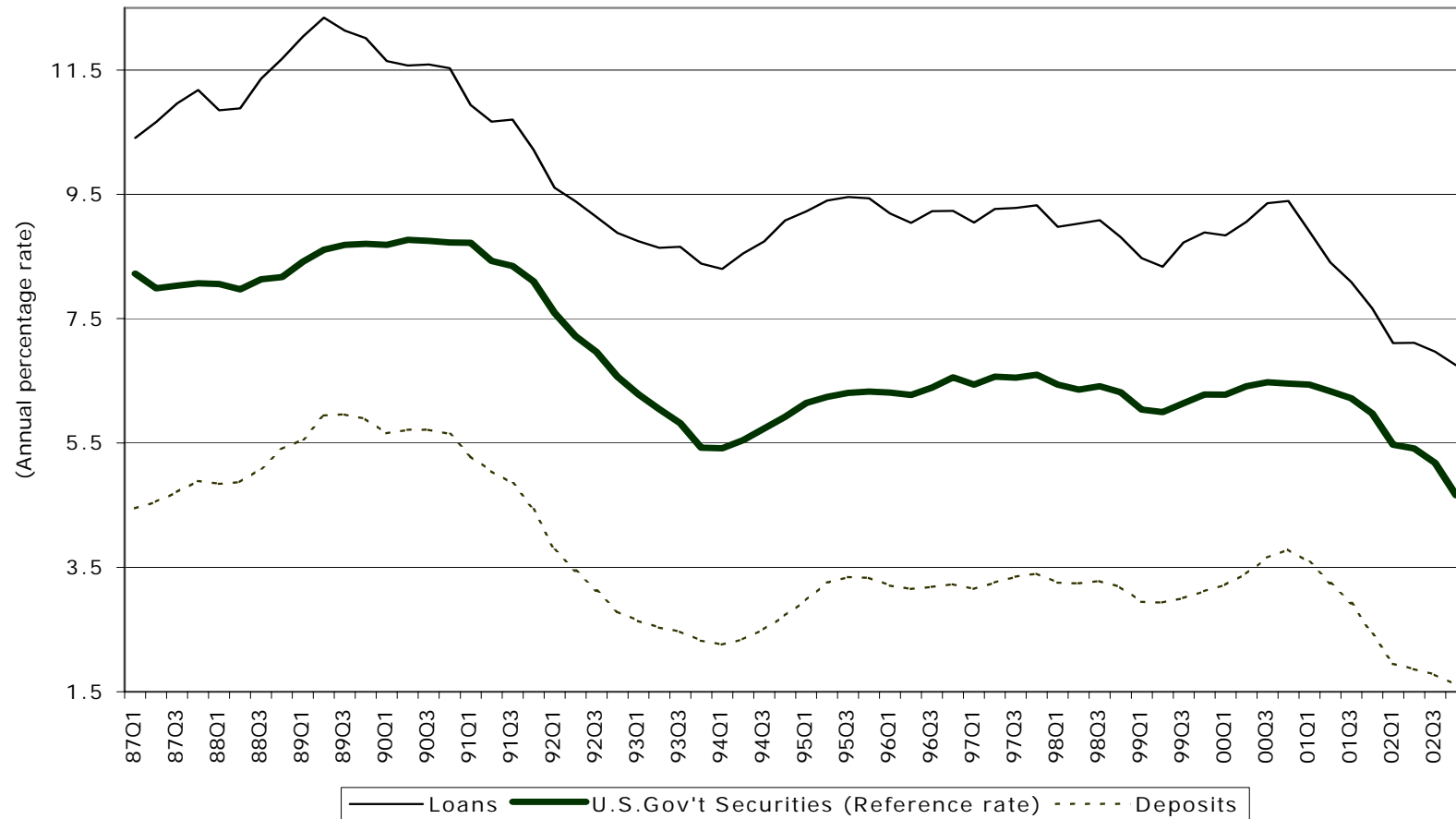


Figure 4. Average Interest Received and Paid by Banks, Book Values



**Figure 5. Comparison of published PCE price index with
Tornqvist user cost based financial services price index .**

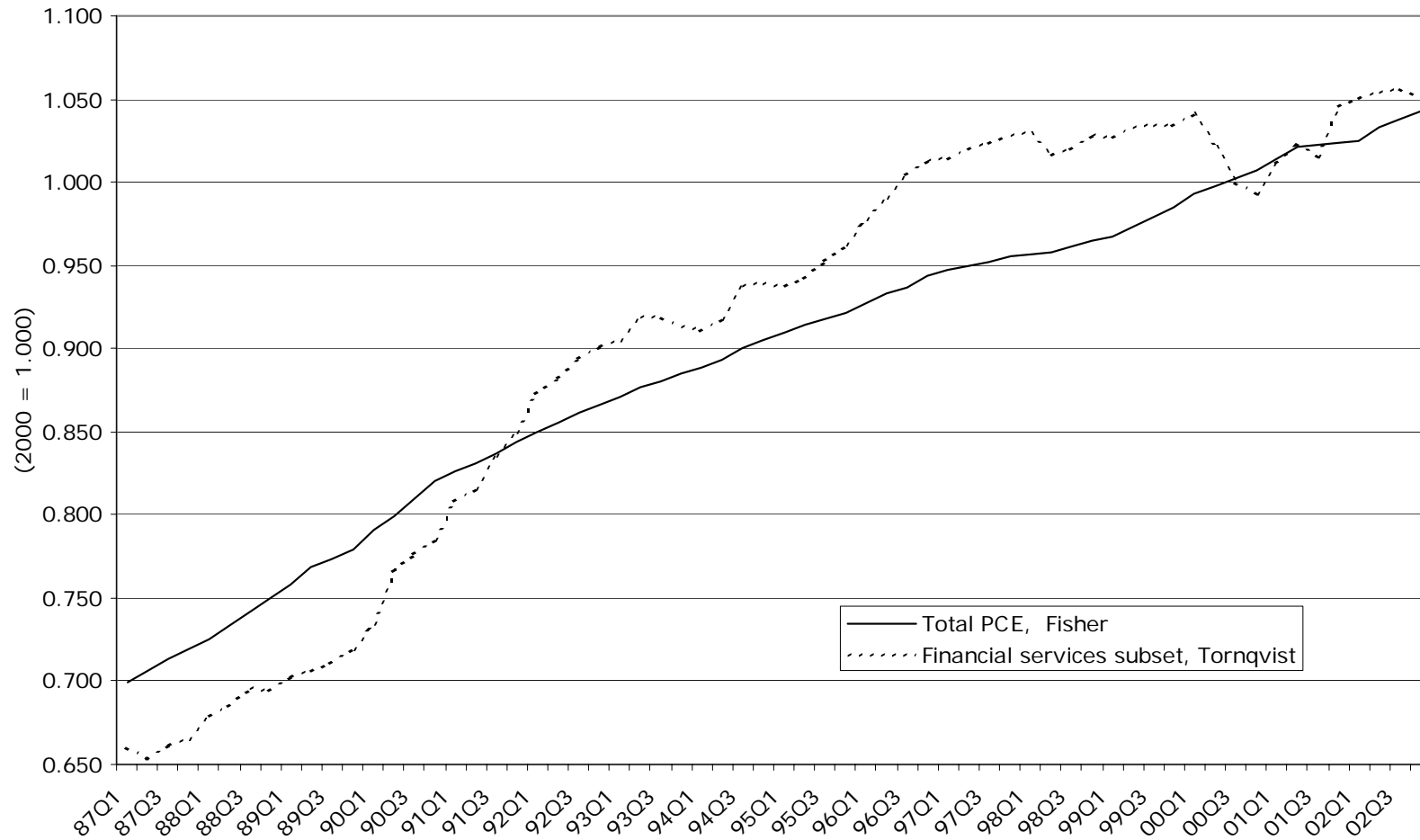


Figure 6. Tornqvist Chained Price Indexes for Financial Services

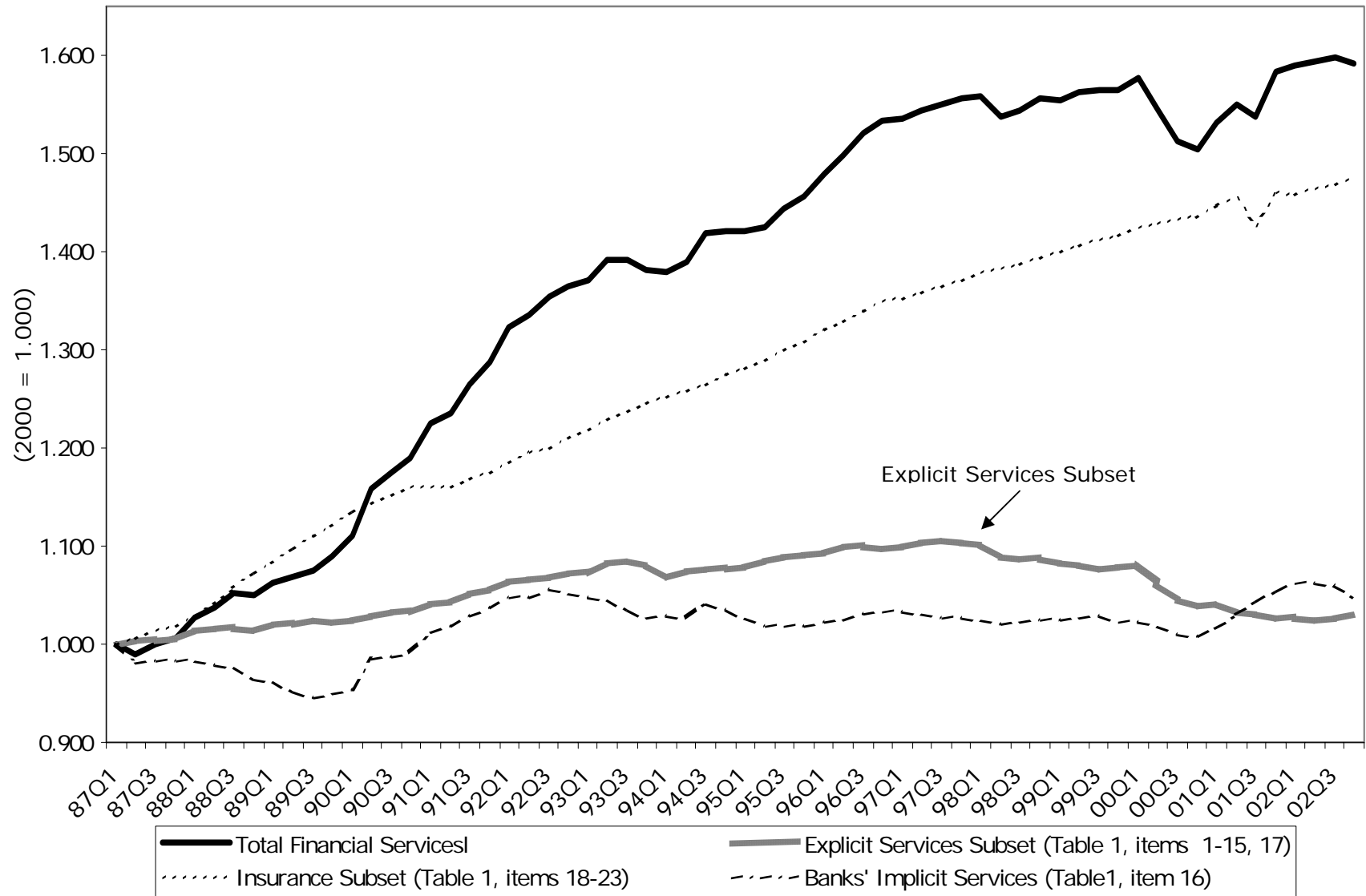
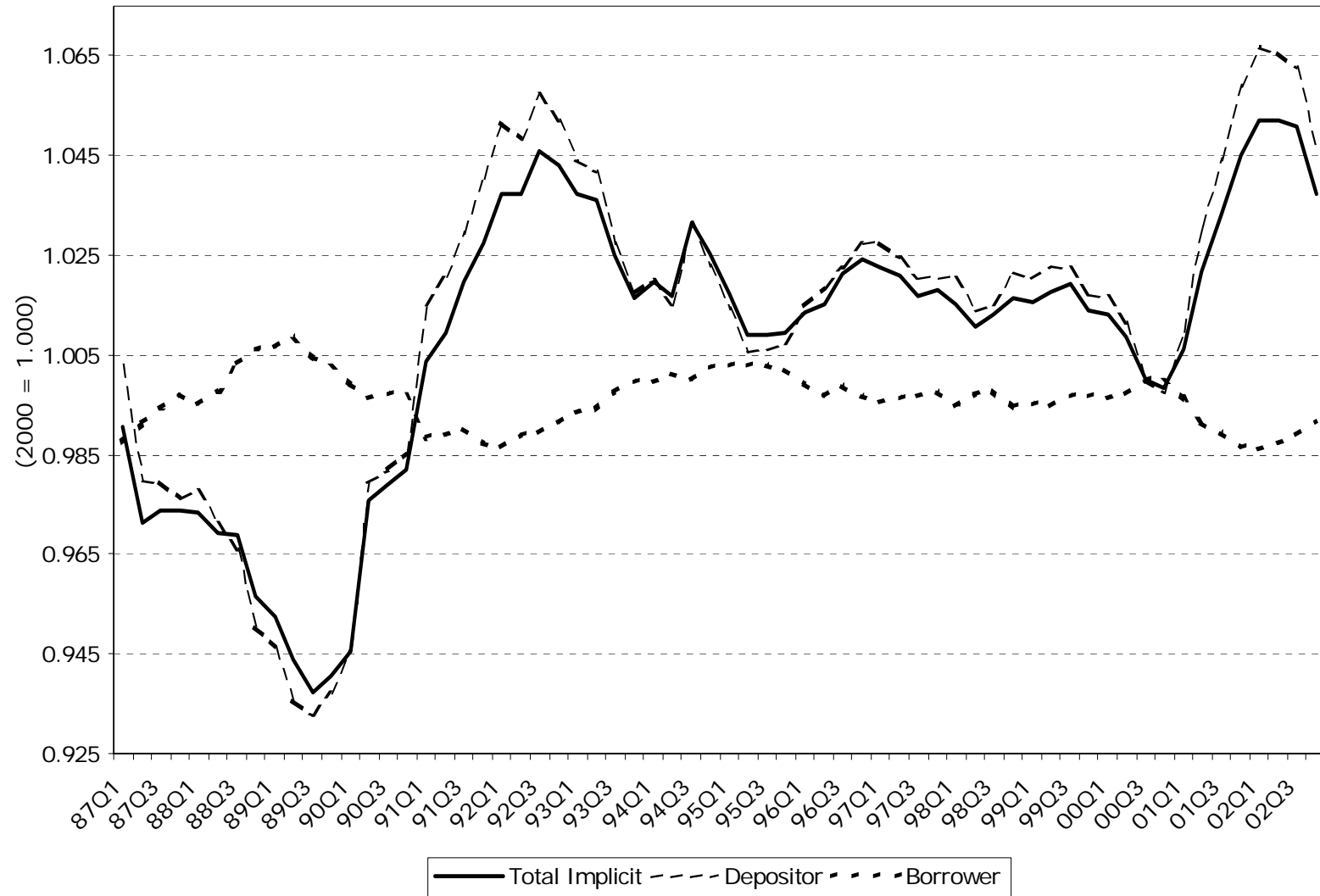
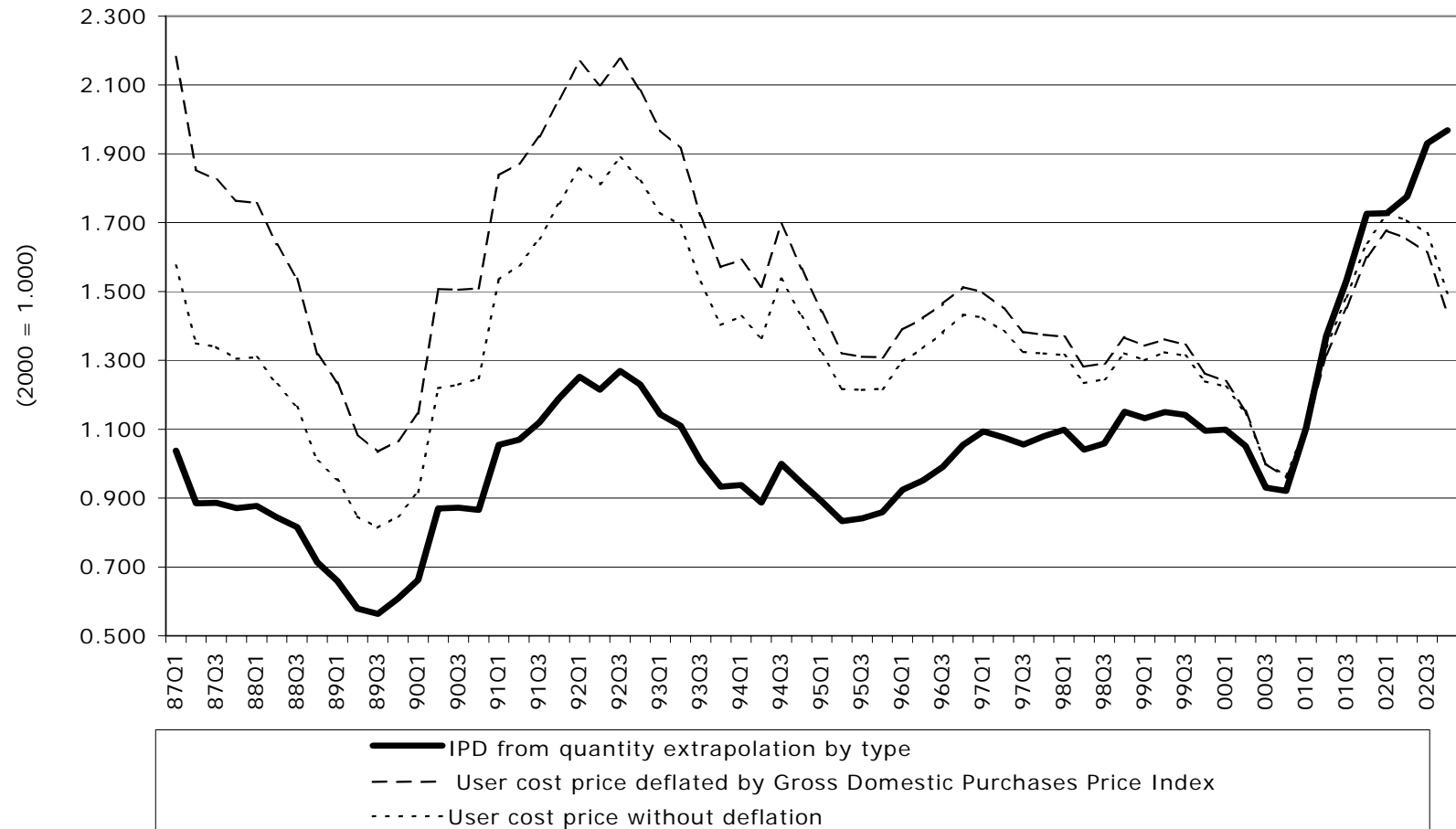


Figure 7. Tomqvist price indexes: Total implicit, Depositor and Borrower Services



**Figure 8. Comparison of Depositor service prices:
implicit price deflator versus user cost**



**Figure 9. Comparison of Borrower service prices:
implicit price deflator versus user cost price**

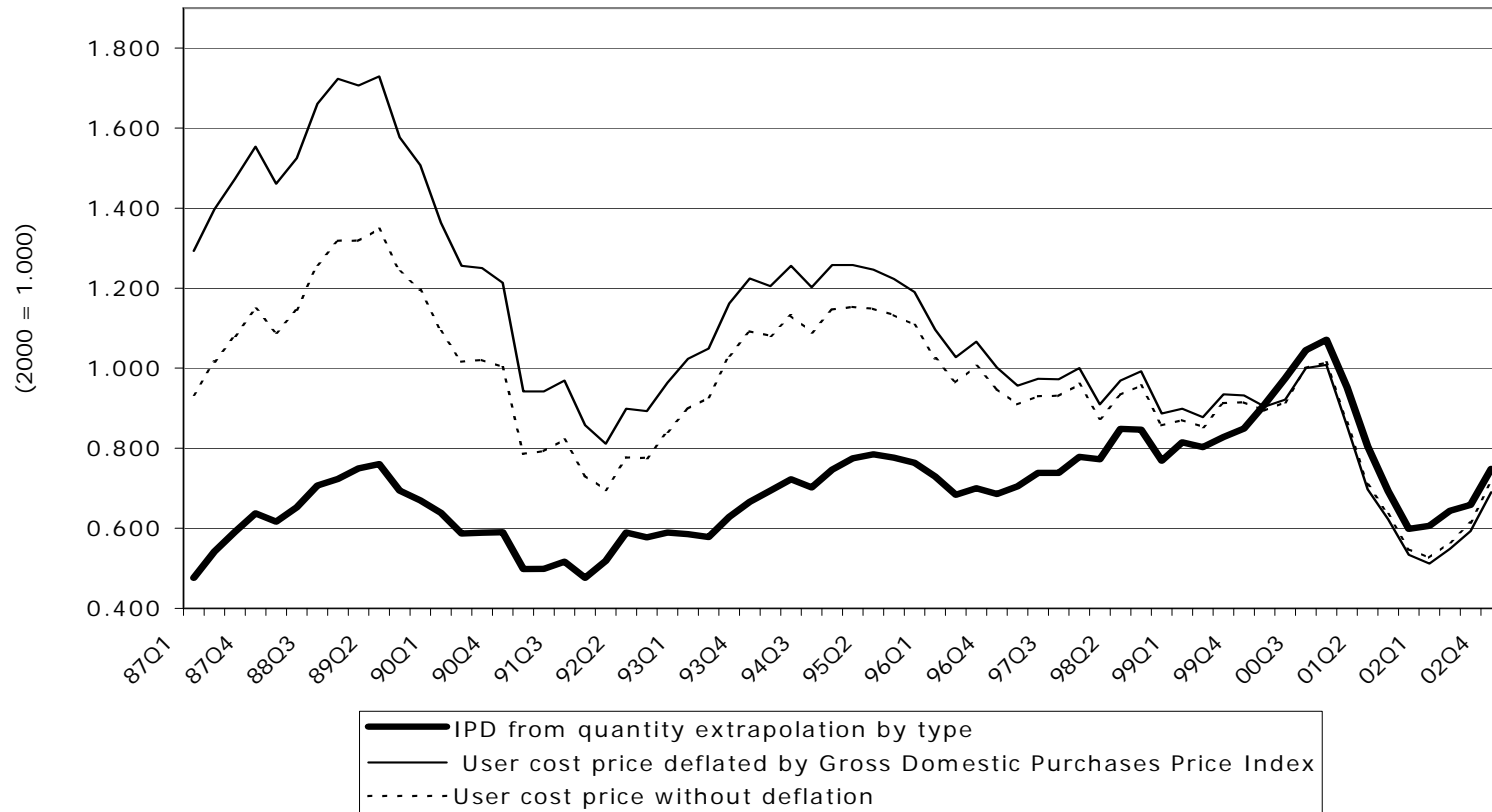


Figure 10. Comparison of Fixed-weighted Quantity Indexes

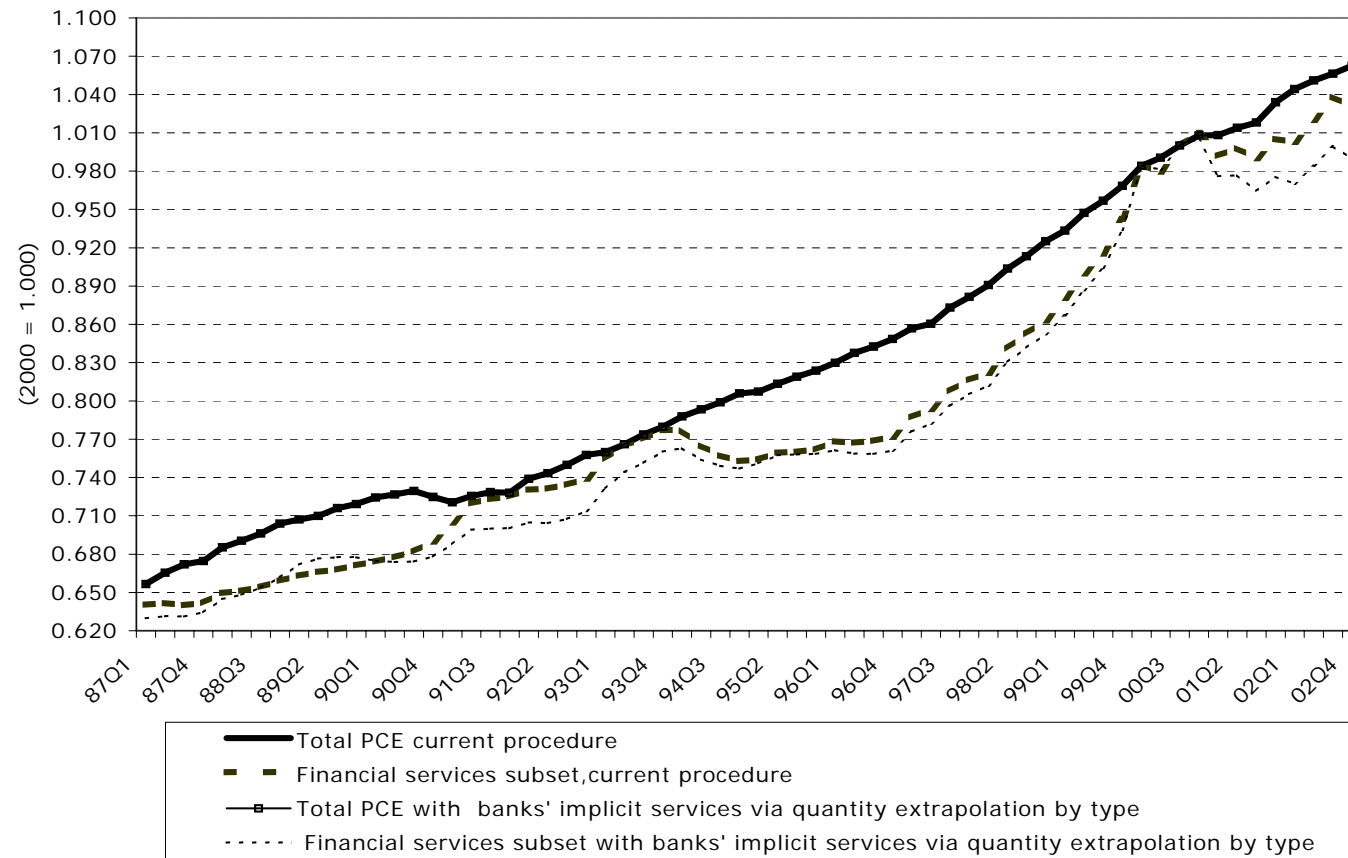


Figure 11. Fixed-weighted Quantity Indexes Banks' Implicit Services

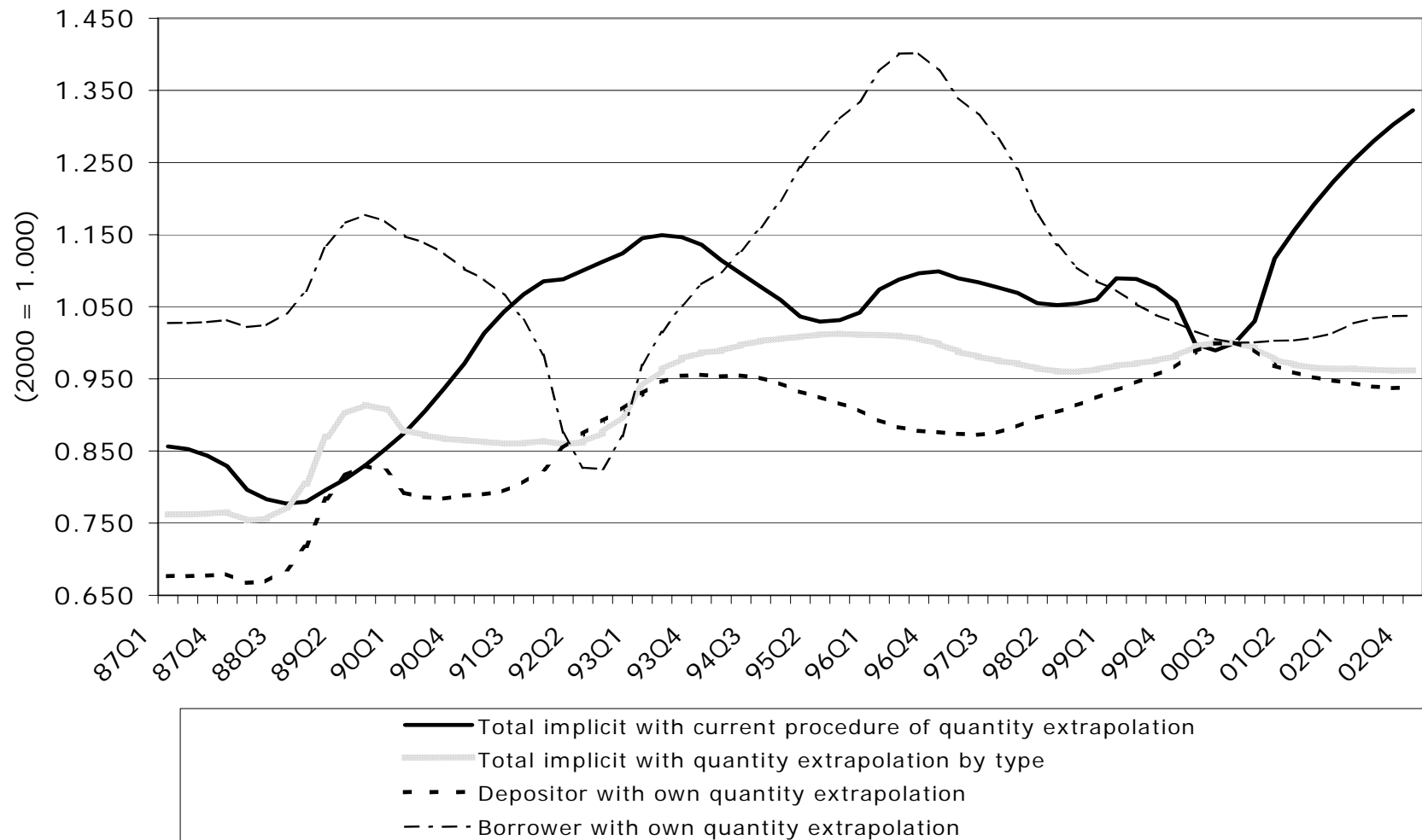
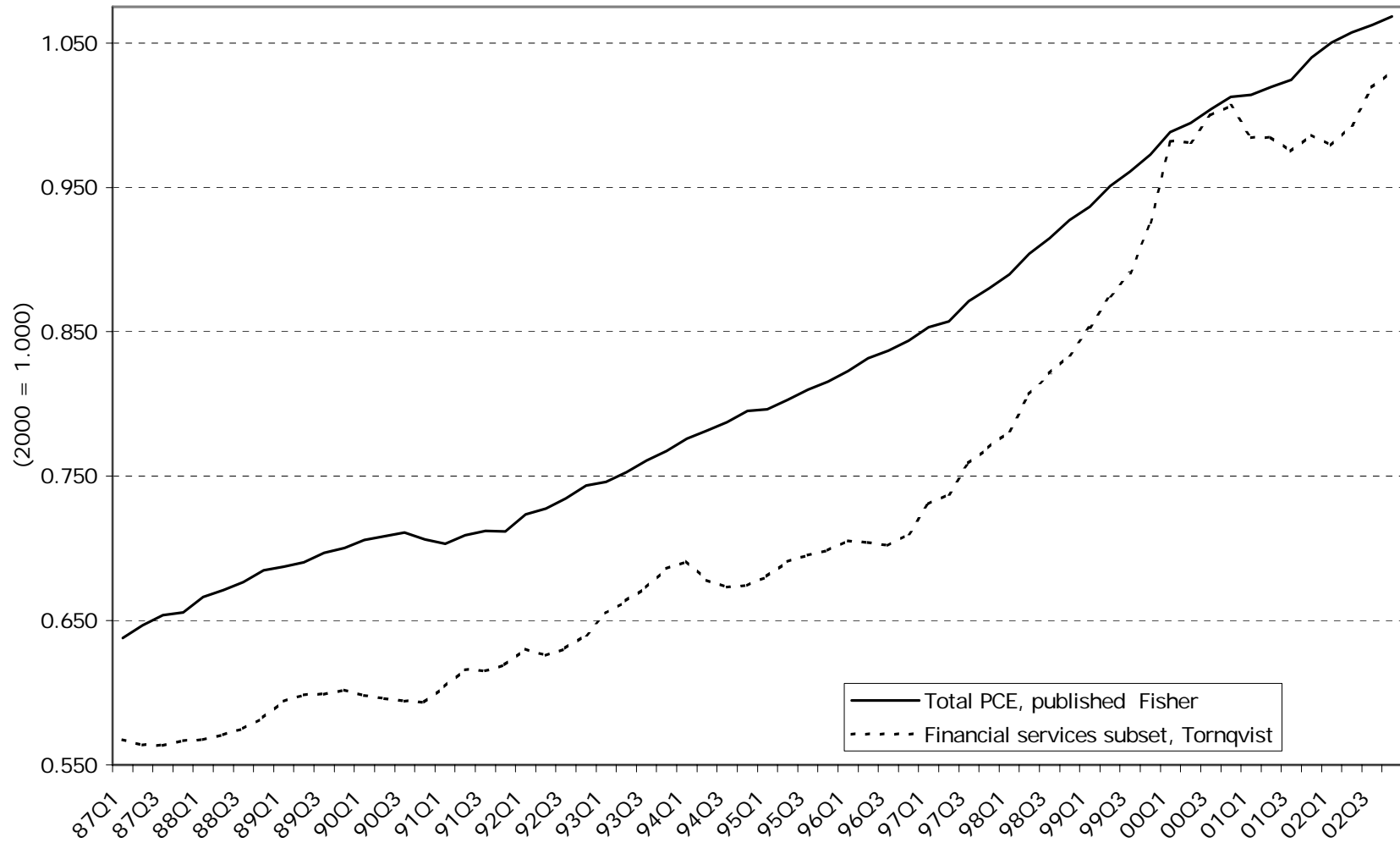


Figure 12. Chain-weighted Quantity Indexes, PCE and Financial Services



**Figure 13. Implicit quantity indexes from Tornqvist price indexes:
Total implicit, Depositor and Borrower servicesx**

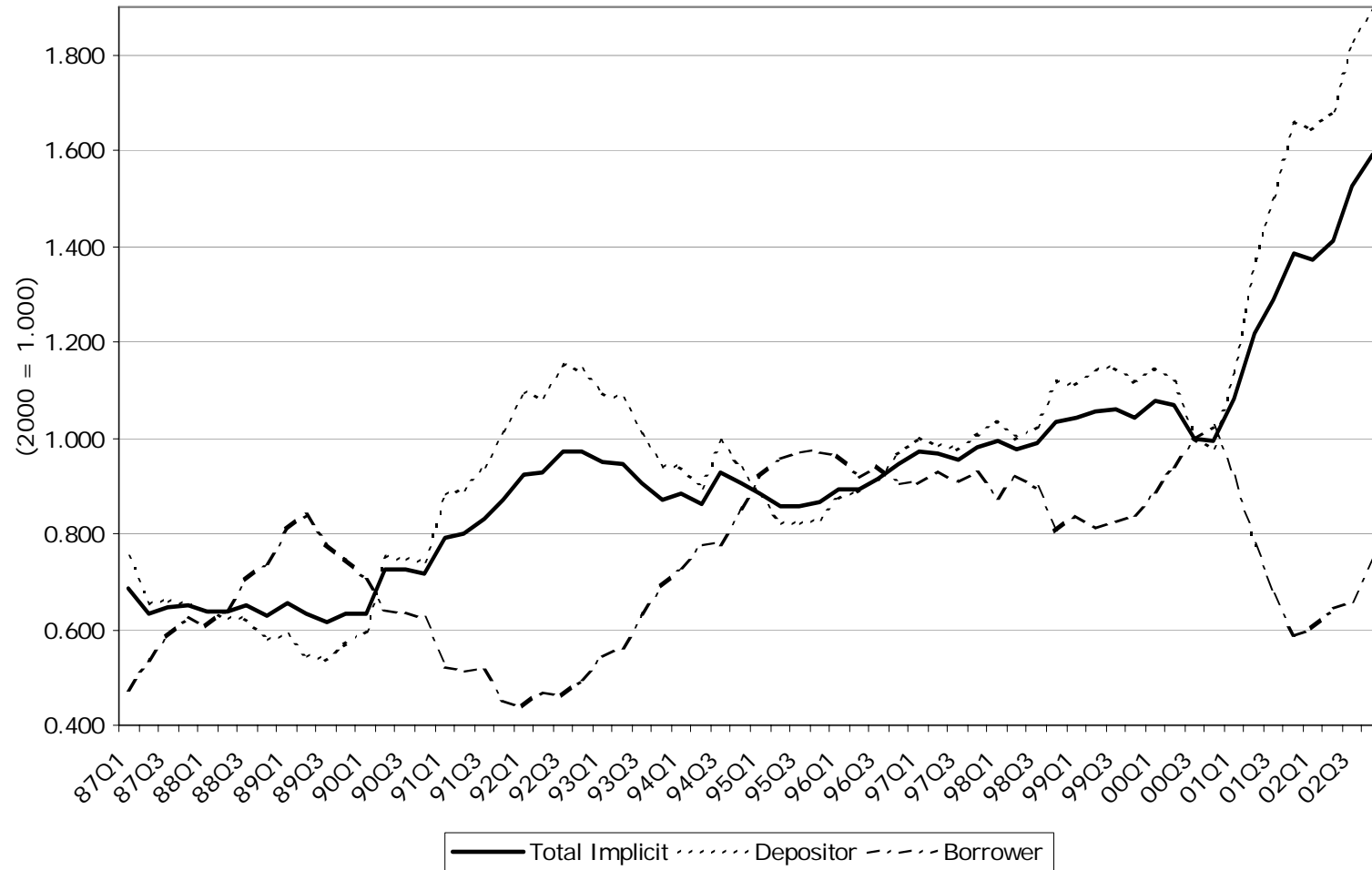


Figure 14. Comparison of Quantity Indexes for PCE Banks' Implicit Services

